

MARSHALL COUNTY KENTUCKY

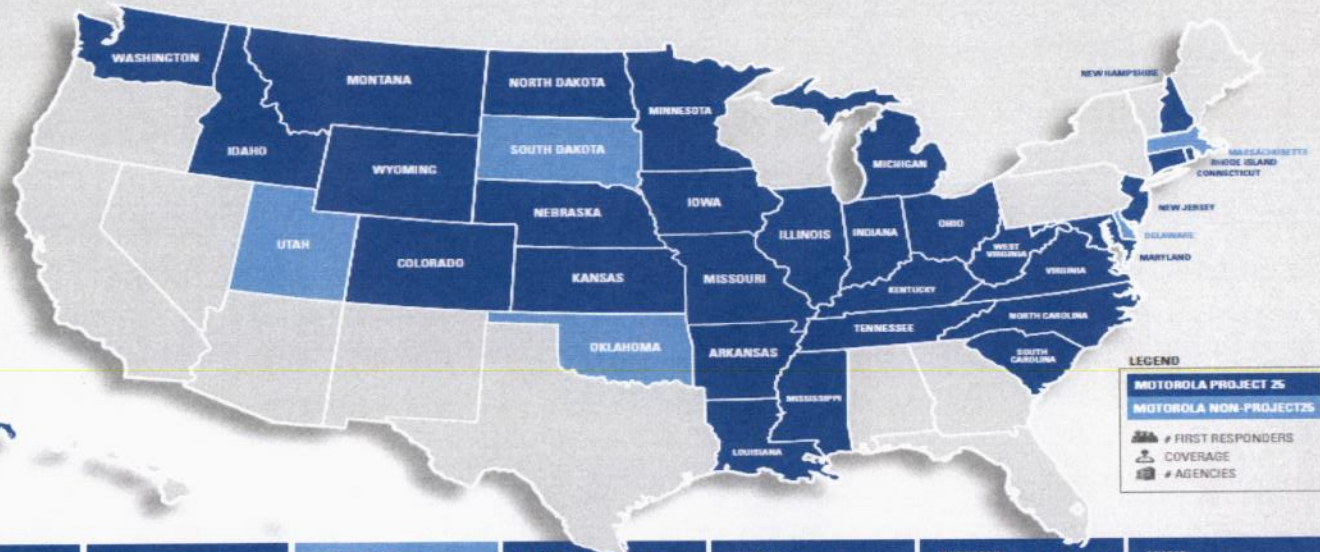
EXPANSION OF KSP's NEW RADIO SYSTEM

- Overview & Proposed Confirmed KSP Sites
- Proposed Coverage | Various Loss Factors

6th of April 2021 – Fiscal Court Meeting
Robbie Smith – Local Account Executive
Jay Burla – Area Sales Manager IN/KY



MOTOROLA STATEWIDE COMMUNICATIONS COVERAGE FROM COAST TO COAST



ALASKA <small>(ALASKA) ALASKA LAND MOBILE RADIO SYSTEM</small> 20,000 90% 125	ARKANSAS <small>(ARW) ARKANSAS WIRELESS INFORMATION NETWORK</small> 28,000 95% 900	COLORADO <small>(STR) COLORADO STATEWIDE DIGITAL TRUNKED RADIO SYSTEM</small> 81,000 95% 900	CONNECTICUT <small>CONNECTICUT STATE POLICE COMMUNICATIONS SYSTEM</small> 10,000 95% 7	DELAWARE <small>STATE OF DELAWARE 911 WIRE STATEWIDE RADIO SYSTEM</small> 10,000 95% 150	IDAHO <small>(COW) IDAHO COOPERATIVE AGENCIES WIRELESS INTEROPERABLE NETWORK</small> 9,300 85% 350	ILLINOIS <small>(TECH) ILLINOIS STATE OF ILLINOIS INTEROPERABLE COMMUNICATIONS PLATFORM</small> 43,000 98% 1,600	INDIANA <small>(IPIC) INDIANA PUBLIC SAFETY COMMUNICATIONS</small> 62,000+ 95% MOBILE 838	IOWA <small>IOWA STATEWIDE INTEROPERABLE COMMUNICATIONS SYSTEM</small> 4,600 95% 4
KANSAS <small>(KANS) KANSAS STATEWIDE INTEROPERABLE COMMUNICATIONS SYSTEM</small> 28,000+ 95% 1,100	KENTUCKY <small>(KENT) KENTUCKY STATE PATROL</small> 1,200 95% 1	LOUISIANA <small>(LW) LOUISIANA WIRELESS INFORMATION NETWORK</small> 79,000 95% 500	MARYLAND <small>(MARI) FIRST MARYLAND FIRST RESPONDERS INTEROPERABLE RADIO SYSTEM TEAM</small> 25,000 95% 35	MASSACHUSETTS <small>(COMM) COMMONWEALTH OF MASS INTEROPERABLE RADIO SYSTEM</small> 16,000 90% 75	MICHIGAN <small>(MICH) MICHIGAN'S PUBLIC SAFETY COMMUNICATIONS SYSTEM</small> 72,000+ 97% 1,500	MINNESOTA <small>(AMER) ALLIED RADIO MATRIX FOR EMERGENCY RESPONSE</small> 85,000 95% 1,000+	MISSISSIPPI <small>(MIS) MISSISSIPPI WIRELESS COMMUNICATION COMMISSION</small> 20,000 97% 405	MISSOURI <small>(MIS) MISSOURI STATEWIDE INTEROPERABLE NETWORK</small> 33,000 95% 1,300
MONTANA <small>(MONT) MONTANA TRUNKED RADIO SYSTEM</small> 4,000 50% 50	NEBRASKA <small>(NEB) NEBRASKA STATEWIDE RADIO SYSTEM</small> 4,000 95% 18	NEW HAMPSHIRE <small>(NH) NEW HAMPSHIRE DEPT. OF SAFETY</small> 700 85% 2	NEW JERSEY <small>(NJ) NEW JERSEY INTEROPERABLE COMMUNICATIONS SYSTEM (NJICS)</small> 25,000 95% 52	NORTH CAROLINA <small>(NOR) VOICE INTEROPERABILITY PLAN FOR EMERGENCY RESPONDERS</small> 78,000 95% 268	NORTH DAKOTA <small>(ND) STATE OF NORTH DAKOTA STATE RADIO SYSTEM</small> 4,700+ 90% MOBILE 75+	OHIO <small>(OH) OHIO MULTI-AGENCY RADIO COMMUNICATION SYSTEM</small> 50,000 97.5% 1200	OKLAHOMA <small>(OK) OKLAHOMA PUBLIC SAFETY NETWORK</small> 35,000+ 90% 550	RHODE ISLAND <small>(RH) RHODE ISLAND STATEWIDE COMMUNICATION NETWORK</small> 9,000 90% 70
SOUTH CAROLINA <small>(SC) SOUTH CAROLINA PALMETTO 911 RADIO SYSTEM</small> 30,000 95% 750	SOUTH DAKOTA <small>(SD) SOUTH DAKOTA STATEWIDE RADIO SYSTEM</small> 20,000 98% MOBILE 500+	TENNESSEE <small>(TN) TENNESSEE STATE WIDE 911 COMMUNICATIONS SYSTEM</small> 20,000 97% 46	UTAH <small>(UT) UTAH STATEWIDE COMMUNICATIONS SYSTEM</small> 20,000+ 90% APPROX. 170	VIRGINIA <small>(VA) VIRGINIA STATEWIDE AGENCIES RADIO SYSTEM</small> 10,000 95% 27	WASHINGTON <small>(WA) WASHINGTON STATE PATROL</small> 3,000 NA 8	WEST VIRGINIA <small>(WV) WEST VIRGINIA INTEROPERABLE RADIO NETWORK</small> 20,000 90% MOBILE 200	WYOMING <small>(WY) WYOMING STATEWIDE PUBLIC SAFETY INTEROPERABLE RADIO COMMUNICATIONS SYSTEM</small> 17,200 90% 73	

KSP 7/800 SYSTEM ARCHITECTURE



GEOGRAPHICALLY REDUNDANT ASTRO CORES – Phase I

- **PRIMARY CORE**
- Frankfort, KY
- **SECONDARY CORE**
- Elizabethtown, KY

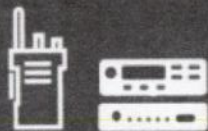


BACKHAUL PROVIDED VIA KEWS

- **KENTUCKY EMERGENCY WIRELESS SYSTEM**
- Goal is to offer a statewide, integrated communications and information network with high speed, high capacity delivery of voice, data and video transmissions positioning the Commonwealth to better serve our citizens with advanced applications and future technologies

COMMONWEALTH OF KENTUCKY P25 LMR PROJECT

PHASE 1A & 1B | 2018



SUBSCRIBER EQUIPMENT

1200 APX8000 PORTABLE TROOPER HANDHELDS
540 APX8500 MOBILE TROOPER VEHICLE RADIOS
540 VRX1000 IN CAR REPEATER SYSTEMS



CORES & CONSOLES

KEWS HQ & KSP POST 4 UPGRADES
REDUNDANT MASTER SITE CORES TO MAXIMIZE UPTIME & NETWORK HEALTH
KSP DISPATCH CENTER UPGRADES
66 MCC 7500E CONSOLE POSITIONS AT ALL 16 KSP POSTS

PHASE 1C | 2019



POST 1 & 2 BUILDOUT |

19 RF SITES
6 CHANNEL FDMA OPERATION
NICE LOGGING RECORDING SOLUTION

PHASE 2 | 2021

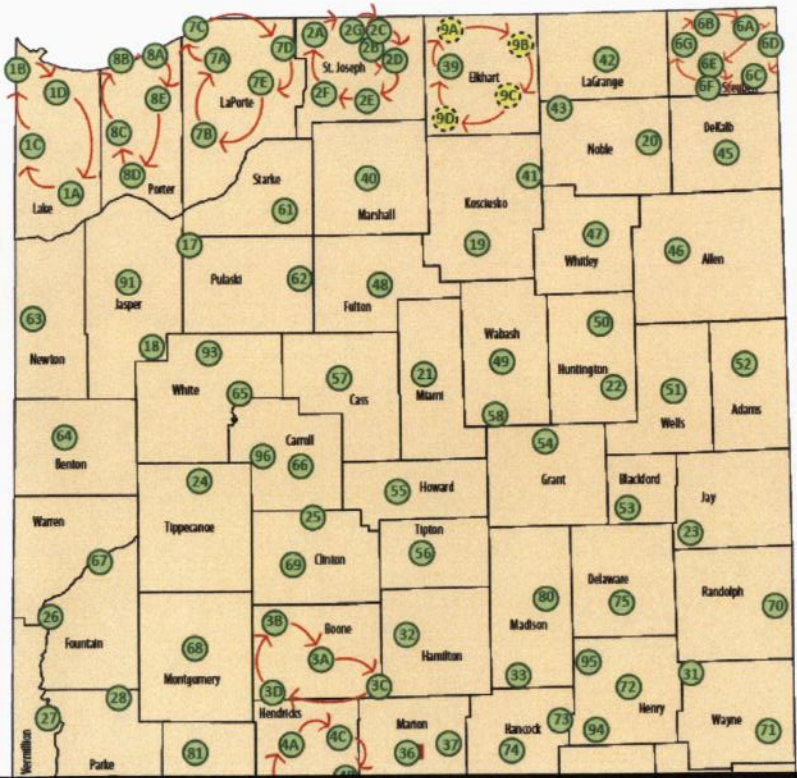


8 POST BUILDOUT |

65 RF SITES, 1 PRIME SITE
GENESIS PERFORMANCE MANAGEMENT SOFTWARE
KMF CLIENT
CRITICAL SITE SPARES FOR EACH POST



Integrated Public Safety Commission P25 System Map



NORTH GROWTH & BENEFITS

March 27, 2014 Executed Upgrade Contract

Number of Simulcast Systems went from 5 to 9

Number of Simulcast Sub sites went from 19 to 42

Number of ASR sites went from 134 – 149

All DOCs added their own sites at each center

County's directly connecting for dispatch went from 7 to 24 and counting

Commitment to at least 2037

Overall growth since first system in early 2000s was 92 sites to 190+ and overall users on system is **90,000+**

EXISTING KSP MOBILE COVERAGE

KSP RF Sites Surrounding Marshall County

KSP SITES SURROUNDING MARSHALL COUNTY

- 1-02 (Mayfield), 1-03 (MSU) 1-04 (Lyon County), 1-06 (Paducah) and 1-08 (Livingston)

Existing Site To Add

- 300' Tower
- Draffenville, Kentucky

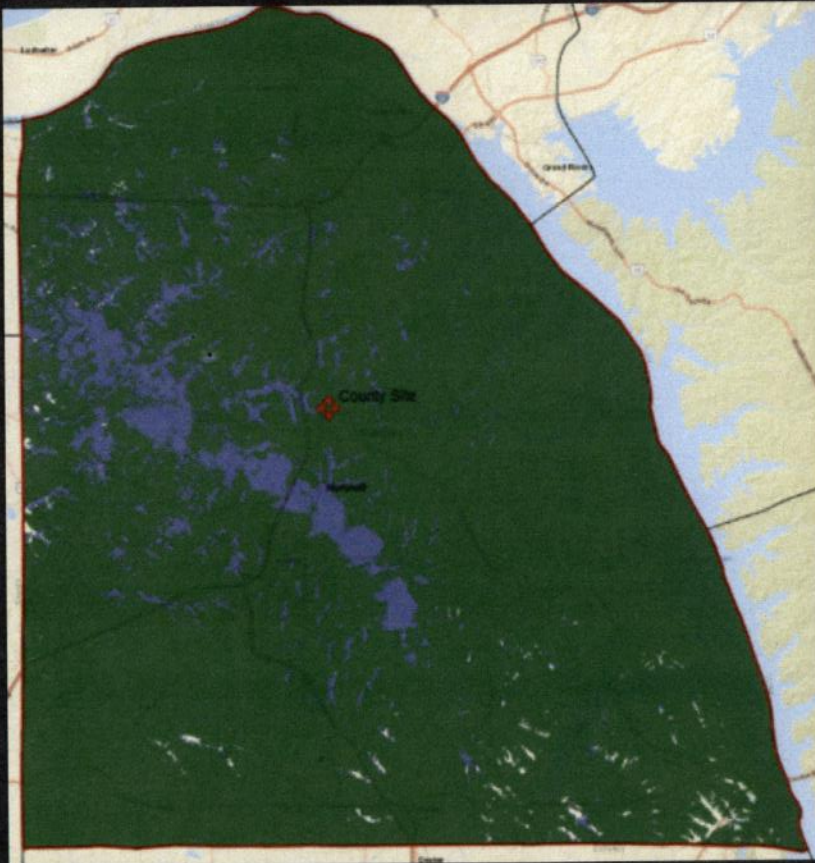


EXISTING KSP COVERAGE

Mobile Coverage within Marshall County after adding County's site to KSP system (Blue Shade)

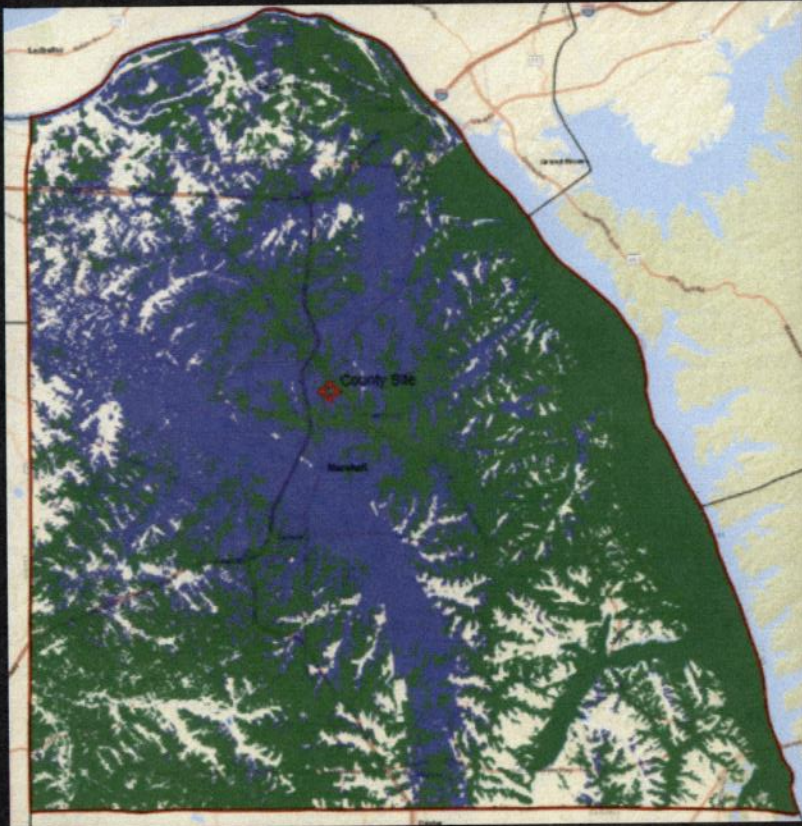
Outbound System Coverage

- Outbound Coverage = Dispatch to Subscriber
- System Designed for Mobile Coverage
- Motorola APX Mobile P25 FDMA
- Shaded Areas 95% Coverage
- Non Shaded - <95% Coverage
- Coverage into surrounding Counties



EXISTING KSP COVERAGE

APX 4000 Portable Coverage within Marshall County after adding County's site to KSP system

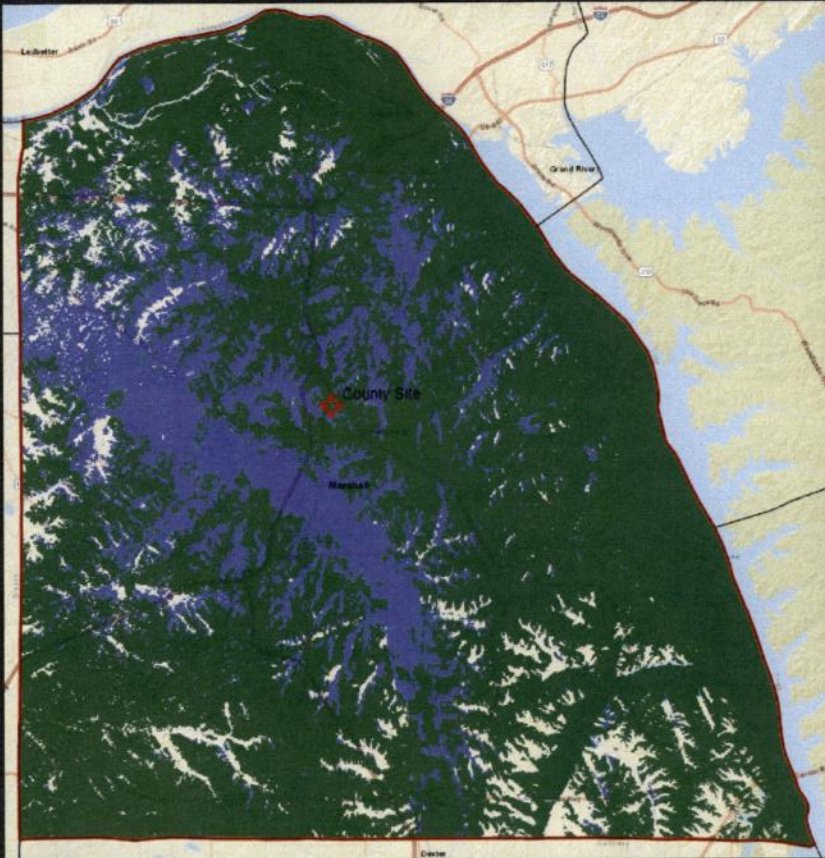


Inbound System Coverage

- Inbound Coverage = Subscriber to Dispatch
- Motorola APX Portable P25 FDMA
- Shaded Areas 95% Coverage
- Non Shaded - <95% Coverage
- Coverage into surrounding Counties

EXISTING KSP COVERAGE

APX 4000 Portable Coverage within Marshall County after adding County's site to KSP system



Outbound System Coverage

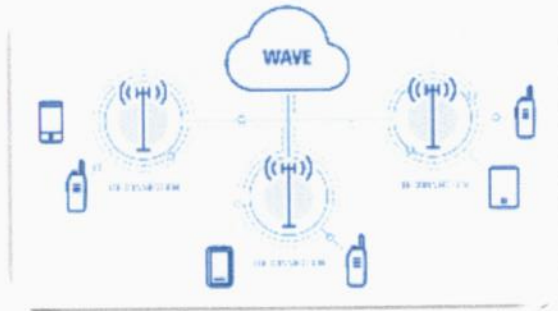
- Outbound Coverage = Dispatch to Subscriber
- Motorola APX Portable P25 FDMA
- Shaded Areas 95% Coverage
- Non Shaded - <95% Coverage
- Coverage into surrounding Counties

Coverage Gaps – How to Fill?

- **Marshall County Possibilities**
- **KSP Potential Future Possibilities**

Simulcast System

- Multiple Sites – can be added later
- Efficient Use of Frequency
- Timed launches for Improved overall coverage



SmartConnect – Requires KSP approval

- Roam via APX NEXT from LMR to ATT or Verizon
- Roam APX6000/8000 LMR to Wi-Fi in coverage gaps
- Great for schools, hospitals, government buildings

CriticalConnect – Requires KSP approval

- Provides for WAVE (PTT over Cellular) connected to LMR
- Roam System to System

SMARTCONNECT

CHANCE

"In the County we have some dead spots where we don't get radio coverage because of the mountains or the distance. Having continuous coverage, even when we're in those areas, will be a plus for officer safety" IT Systems Manager Spokane County Sheriff's Office

SAVINGS

Rethink the use of BDAs, patch work signaling, control stations with hard lined antennas and the old adage of just accepting there isn't an answer

STAY CONNECTED TO YOUR LIFELINE WITH SMARTCONNECT

SmartConnect automatically switches your voice communications to broadband if you lose radio coverage.

When you move beyond the limits of your radio system's coverage, you shouldn't have to leave your lifeline behind. Whether a pursuit takes you out of coverage, or you're assisting another agency, SmartConnect ensures your lifeline is always in reach.

[EXPLORE SMARTCONNECT](#)



Cost Structure

- Marshall County Responsibility

- Purchase 6 Channel RF Site
- Purchase Microwave path from Draffenville to KSP (Mayfield)
- Purchase Software Upgrade plan with MSI
- Keep system maintained with authorized Motorola technicians
- Maintain current VHF capabilities to work along with new system – MSI not touching this
- Add Consolettes to current Zetron system

- KSP Responsibility

- Maintain relationship with KEWS and KSP
- Current upgrades contracted through 2032
- Provide Radio IDs to Marshall County (MSI)
- Maintain system with current trained techs
- Validating User Agencies and TG allotment

