



Marshall County Judge / Executive's Office

Brad Warning
Deputy Judge / Executive
brad.warning@marshallcountky.gov

Kevin Neal
Judge / Executive
kevin.neal@marshallcountky.gov

Cory Dysinger
Administrative Assistant / Fiscal Court Clerk
cory.dysinger@marshallcountky.gov

October 22, 2021

Judge Jamie Jameson, Founder
42nd Judicial Circuit Community Corrections Board
80 Judicial Drive
Benton, KY 42025

Dear Judge Jamie Jameson:

Re: Relife Women's Recovery Center – Letter of Support

On behalf of the Marshall County Fiscal Court, please accept this letter of support to the Fletcher Group in their application for Relife Women's Recovery Center serving Marshall and Calloway Counties. The Court strongly supports this grant application and the focus on assisting those in recovery.

As a business located in area to be served by Relife, we see first-hand the devastation the drug epidemic has caused in our community. Through this letter, we acknowledge our full support the dedication to the goals outlined in this proposal.

In the event this proposal is funded, we will support Relife Women's Recovery Center by:

- forming a partnership with the Fletcher Group, Relife, and West Kentucky Workforce Board.
- providing employment opportunities to individuals who have successfully completed treatment and are ready to enter the workforce.

The Marshall County Fiscal Court will work with the Fletcher Group and West Kentucky Workforce Board to establish a talent pipeline to employment. We look forward to working with these organizations in the ongoing efforts to benefit those in recovery in Marshall and Calloway Counties.

Sincerely,

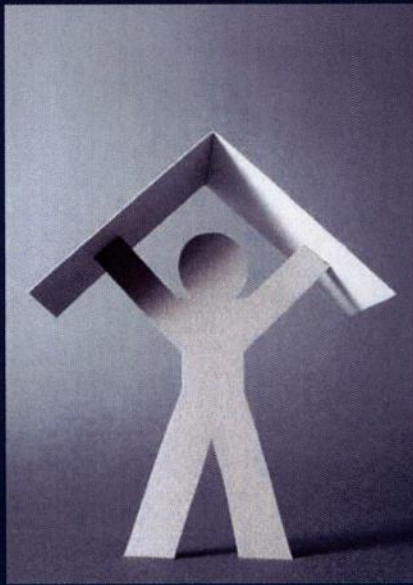
Kevin Neal
Marshall County Judge/Executive

SAVING LIVES

CREATING HOPE

HOW YOU CAN MAKE A DIFFERENCE

In Marshall and Calloway Counties



RECOVERY HOUSING IS THE SOLUTION

RECOVERY HOUSING

FOR CALLOWAY AND MARSHALL COUNTIES

THE PROBLEM

Illicit substance use continues to devastate Kentucky families, communities, social services, and local economies.

What began as an issue associated with the poor or malcontent has spread across all strata of society.

Many men and women—their families and communities as well—have been caught in a "living hell" of drug addiction without access to adequate services and facilities.

With each cycle, the wheel of destruction spreads further, crossing both social lines and generations.

It's time for Calloway and Marshall Counties to end this deadly cycle.

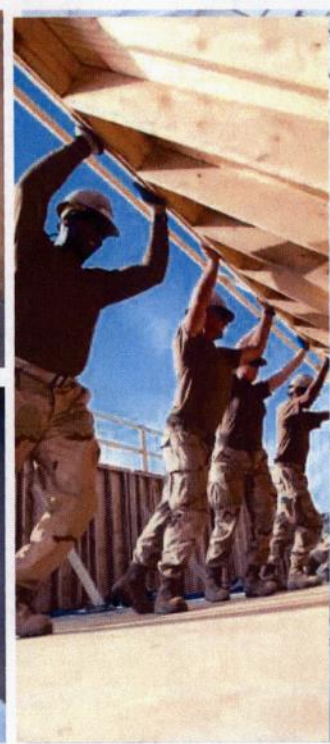
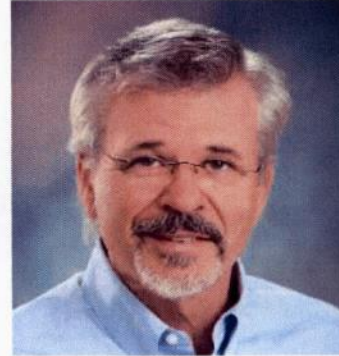


SAFE HOUSING IS THE KEY

Recovery is virtually impossible without a safe, sober place in which to live. Our new project will help those in need stop the endless cycle from couch-surfing to emergency room to jail. It will provide a safe haven for those who sincerely wish to rebuild their lives but whose past mistakes or criminal record would otherwise make safe housing impossible. It will also facilitate delivery of the evidence-based treatments and services required for genuine, long-lasting change.

HOW IT BEGAN

After returning to Western Kentucky following law school, Judge Jameson saw the extent to which his home region of Western Kentucky was being ravaged by illicit drug use. He first formed an Intensive Outpatient Treatment Program with one local church and then two others. After being elected to Kentucky's 42nd Circuit Court, Jameson leveraged those programs to assist hundreds of people in need. But with roughly 96 percent of his cases drug-related in one way or another and only 15 to 25 spots open in Calloway and Marshall drug courts, Jameson knew that still more needed to be done. The men and women appearing before him in court were in far greater need of treatment than punishment, but existing services and facilities were inadequate to the task.



A CONTINUING SEARCH

Jameson's next step was to establish a Community Corrections Board to save county monies and free up county jails by funding home incarceration programs, drug and alcohol counseling, and community service work opportunities. But even as the CCB recorded significant success, Jameson became evermore aware of the need for recovery housing. That eventually led to a meeting with renowned architect Josh Vernon to imagine what an ideal residence might look like.



A UNIQUE PARTNER

Throughout Jameson's quest, one name kept popping up again and again: that of former Kentucky Governor Ernie Fletcher. Dr. Fletcher was also hearing all about Jameson. To no one's surprise, they hit it off immediately when a meeting was suggested by state leaders acquainted with their passion for helping others.

Fletcher remains a well-known and highly respected figure in Kentucky, in part for launching the highly successful Recovery Kentucky program of recovery residences during his tenure of governor. As Founder and Chief Medical Officer of the Fletcher Group, he and his staff are devoted to extending the Recovery Kentucky model nationwide. They are currently busy providing evidence-based Technical Assistance to partners in ten states, from West Virginia to Washington and including Kentucky.

The Fletcher Group has been working with Jameson's Re-Life organization for many months now with the goal of providing the women of Calloway and Marshall counties with a shelter where they can begin their journey of recovery in the most safe and effective manner possible.

THE RE-LIFE WOMEN'S RECOVERY CENTER

BASED ON THE PROVEN RECOVERY KENTUCKY MODEL



AN EVIDENCE-BASED PROGRAM THAT WORKS

PHASES 1 AND 2

Women will be referred to the facility from local drug court programs, detention facilities, court proceedings, self-referrals, and family referrals. Clinical needs will be assessed at intake. Medication-assisted treatment will be available. And staff and peers will support residents in:

- Taking responsibility for their own recovery
- Becoming empowered toward that end
- Participating in peer-led accountability programs
- Attending mutual self-help meetings, including 12-Step and Celebrate Recovery programs
- Receiving clinical support through on-site intensive outpatient services
- Receiving individual clinical support from qualified professionals

PHASE 3

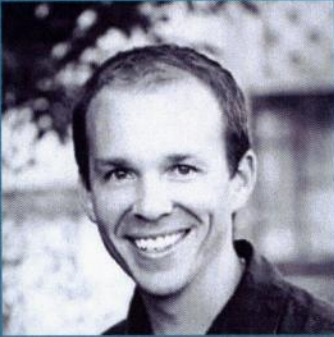
Residents methodically address and clean up the wreckage of their past lives and begin searching for outside employment. This includes:

This includes:

- Vocational and Education Evaluations
- Development of soft & professional skills
- Taking advantage of vocational and educational opportunities
- Using Direct Employment Services to gain permanent jobs and build careers
- Engaging in an effective Family Reunification Process

JOSHUA VERSON

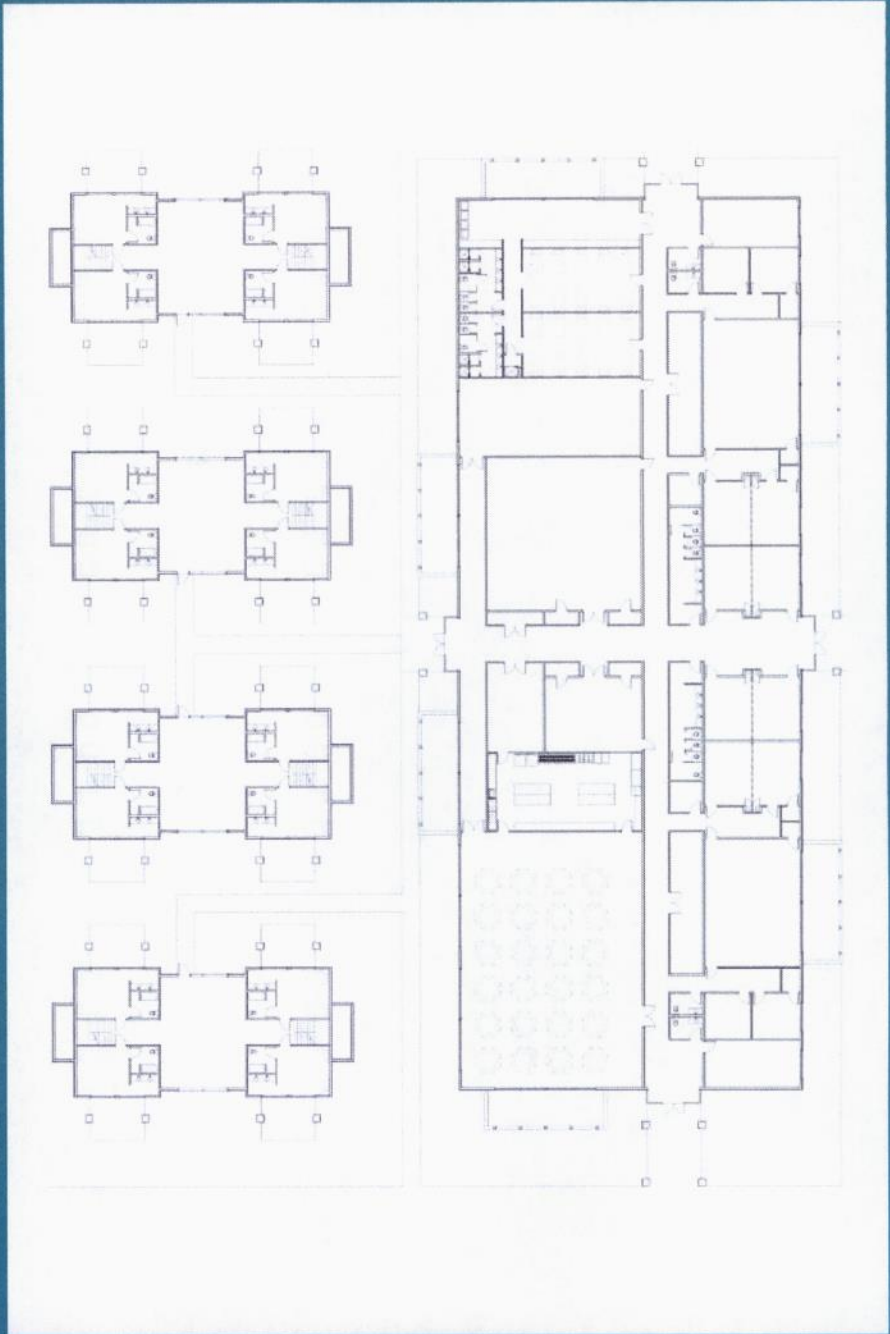
PRINCIPAL ARCHITECT



Josh's experience ranges from small renovations to multi-million dollar civic and public facilities, including the Recovery Kentucky In-Patient Rehabilitation Facility in Murray, Kentucky and the Kentucky Enterprise Industrial Park Building in Pikeville, Kentucky.

Dedicated to responsible development that reduces energy consumption and material waste, Josh maintains a firm grasp on budgetary requirements to ensure maximum fiscal responsibility.

Josh also contributes to his local community as a member of several service organizations.



TIMELINE

As of June of this year (2021), the funding process for the Re-Life Women's Recovery Center has begun with the goal of breaking ground in the summer of 2023.

A PROVEN MODEL

Our facility will have at its core the peer-driven model of recovery pioneered by the Recovery Kentucky program that has proven so effective at safeguarding the lives of mothers and their children.

COUNTY BENEFITS

Beyond what it will do to help residents, the county will reap the following benefits.

- Less jail overcrowding
- Outstanding return on investment. By reducing law enforcement interactions, court appearances and jail stays, comparable programs like Recovery Kentucky have returned \$2.56 for every dollar invested.
- New hope for local communities; Recovery Housing is a rare "bright light" amidst a substance use epidemic that has torn families apart and claimed thousands of lives.

\$2.25
RETURN ON EACH DOLLAR INVESTED

The return on invested funds to address the SAHSA-007 created by the rise in mothers in the workplace to the return on public programs that have been shown to be effective in the past. These programs have returned \$2.25 of avoided justice costs.

— 2020 Kentucky Recovery Annual Report

\$5M
TAX SAVINGS

\$0.2 Million
Cost to Society (40 beds)

—

\$1.2 Million
Cost to Society (40 Beds up)

—

\$5 Million
Cost to Society (40 Beds)

— 2020 Kentucky Recovery Annual Report

Outcomes At A Glance

From the Recovery Kentucky Program on which the Fletcher Group model is based.

	AT INTAKE	AT FOLLOW-UP	RELATIVE CHANGE
Illegal Drug Use	86%	14%	83.7% Decrease
Opioid Use	63%	7%	88.9% Decrease
Alcohol Use	44%	7%	84.1% Decrease
Homelessness	35%	10%	71.4% Decrease
Rearrest	60%	11%	81.7% Decrease
Anxiety	72%	20%	72.2% Decrease
Depression	66%	16%	75.8% Decrease
Suicidal Ideation	29%	3%	89.7% Decrease
Employment	45%	82%	82.2% Increase



Samuel "Sam" Siris

In Loving Tribute

Sam was a young man from South Marshall County who everyone liked. But Sam struggled with a severe drug addiction that had him in and out of local jails for years. Prior to joining the 42nd Circuit Court, Judge Jameson represented Sam and helped him get treatment.

But addiction is never "cured." It requires a life-time commitment to staying away from old triggers that come in the form of people, places, and activities. It also requires a daily commitment to staying in touch with supportive peers and sponsors through programs like Narcotics Anonymous, Alcoholics Anonymous, and Celebrate Recovery.

But Sam didn't listen when Judge Jameson warned him that he was just beginning to recover from his many years of addiction and that it would take time before he could let his guard down. Sadly, Sam died of an overdose just a few weeks after returning from treatment.

Sam's tragic story reminds us that treatment is not a short-term goal. It is a lifetime commitment that requires relentless dedication to the principles of sobriety.

— “ —

With \$2.7 million already identified, we need just \$3 million more to provide the recovery facilities that Calloway and Marshall counties need to stop the cycle of reincarceration. Your generous donation can make all the difference!

— Dr. Ernie Fletcher

— ” —

BE THE CHANGE. DONATE TODAY!

ONLINE

It's easy to make your donation online by visiting www.re-life.us

BY MAIL

Make checks payable to:
42nd Judicial Circuit
Community Corrections Board
80 Judicial Drive
Benton, KY 42025

BY PHONE

Call (270) 527-1480

WITH QR CODE

You can also donate by using the QR code on the right with your phone and credit card number.

 **PayPal**



Scan. Pay. Go.

The 42nd Judicial Circuit Community Corrections Board is a 501c3 non-profit charity. Donations may be tax-deductible.



The Fletcher Group
601 Meyers Baker Road
Suite 238
London, Kentucky 40741
(606) 657-4662
fletchergroup.org

42nd Judicial Circuit
Community Corrections Board
80 Judicial Drive
Benton, KY 42025
(270) 527-1480
re-life.us

